

# MARICOPA COUNTY ADULT PROBATION

## ORGANIZATIONAL CHART



### ADULT PROBATION CHIEF

MICHAEL CIMINO



#### ADMINISTRATIVE SERVICES

CHIEF OF ADMINISTRATION  
BRANDELYN JACKSON



#### COMMUNITY SUPERVISION

CHIEF OF COMMUNITY SUPERVISION  
SAUL SCHOON



#### ASSESSMENT & DEVELOPMENT

CHIEF OF ASSESSMENT & DEVELOPMENT  
THERESE WAGNER



#### COMPLIANCE MONITORING DIVISION

MARS, UNSUPERVISED, FINANCIAL COMPLIANCE, COMMUNITY RESTITUTION, & INTERSTATE COMPACT INCOMING & OUTGOING

DIVISION DIRECTOR  
ANNA KING



#### CENTRAL FIELD DIVISION

DIVISION DIRECTOR  
JENIFER MEILEY



#### EASTERN FIELD DIVISION

FUGITIVE APPREHENSION

DIVISION DIRECTOR  
WES SHIPLEY



#### NORTHERN FIELD DIVISION

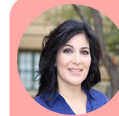
DOMESTIC VIOLENCE

DIVISION DIRECTOR  
KRISTI WARD



#### WESTERN FIELD DIVISION

DIVISION DIRECTOR  
TED MILHAM



#### PRESENTENCE INVESTIGATIONS

ASSESSMENTS, ASSIGNMENTS, & RECORDS

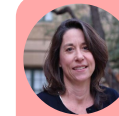
DIVISION DIRECTOR  
ADELITA NUNEZ



#### PRETRIAL SERVICES DIVISION

INITIAL APPEARANCE, PRETRIAL SUPERVISION, & PROBATION REVOCATION COURT

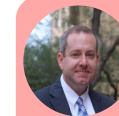
DIVISION DIRECTOR  
LOLITA RATHBURN



#### PROGRAMS DIVISION

DRUG COURT, DUI COURT, VETERAN'S COURT, & YOUTHFUL OFFENDER PROGRAM

DIVISION DIRECTOR  
JACI CHRISTENSON



#### REENTRY SERVICES DIVISION

DOC REENTRY, EDUCATION, WORK FURLOUGH, SMI, & COMMUNITY REINTEGRATION

DIVISION DIRECTOR  
JASON WALKER



#### ORGANIZATIONAL DEVELOPMENT & SUPPORT DIVISION

COMMUNICATIONS CENTER, STAFF DEVELOPMENT, RESEARCH & PLANNING, ADMINISTRATIVE SERVICES, & VICTIM SERVICES

DIVISION DIRECTOR  
RYAN VALLEY



#### SEX OFFENDER DIVISION

DIVISION DIRECTOR  
CYNTHIA STEVENS